



A B I N F L A T A B L E S

Profile F

F 14

Professional Fiberglass Boats



S P E C S

Overall Length	: 14' / 4.27m	Number of Chambers	: 4 + 1	Shaft Length	: 20" / 50.8cm
Overall Beam	: 6'4" / 1.94m	Person Capacity	: 8	RDC Design Category	: C
Inside Length	: 10'10" / 3.30m	Weight	: 403lb / 183kg		
Inside Beam	: 3'1" / 0.94m	Recommended HP	: 40hp / 29.8kw		
Tube Diameter	: 19" / 0.48m	Maximum HP	: 50hp / 37.3kw		

S T A N D A R D  
F E A T U R E S

- Professional Grade Hand Laid Fiberglass Deep "V" Hull
- Stringer System Laminated into Hull
- Bow Locker/ Seat
- Diamond Shape Non - Skid Deck
- Plastic External Transom Plate
- Aluminum Internal Transom Plate
- Heavy Duty 1670 Decitex Orca (CSM) Five Layer Coated Fabric
- Life Line Around Tube
- Non - Skid (CSM) Coated Fabric on Tube's Surface
- Pressure Relief Valves
- 4 Push Push Plastic Non-Corrosive 2 Stage Inflation Valves
- Double Solid Rub Rail
- Stainless Steel Bow Eye
- 4 Stainless Steel Davit Lifting Points
- Stainless Steel Towing Rings & Tie Downs
- Deck Condensation Plug
- Deck Drain with Plug
- 1 Front & 4 Side Orca (CSM) Fabric Handles on Tubes
- 3 Layer Reinforced Seams
- Paddle with Aluminum Shaft
- Paddle Holders
- Removable Stern Seat
- Hand Pump
- Maintenance Kit
- Owner's Manual
- Additional Air Retaining Chamber Under the Floor
- Drain Scupper

O P T I O N A L  
F E A T U R E S

- Bow Hatch Cushion
- Boat Cover
- Chock Set
- Bow Step with Fold Down Stainless Steel Cleat
- Lateral Fold Down Stainless Steel Cleat
- Removable Rowing Seat
- Bimini Top
- Fiberglass Console
- Fiberglass Console with Forward Seat
- Bench Seat with Storage
- Two person Jockey Seat
- Stainless Steel Helm Unit



www.abinflatables.com



S P E C S

Overall Length	: 15' / 4.57m	Number of Chambers	: 5	Shaft Length	: 20" / 50.8cm
Overall Beam	: 6'6" / 1.99m	Person Capacity	: 11	RDC Design Category	: C
Inside Length	: 11'6" / 3.50m	Weight	: 484lb / 220kg		
Inside Beam	: 3'2" / 0.97m	Recommended HP	: 60hp / 44.8kw		
Tube Diameter	: 19" / 0.48m	Maximum HP	: 75hp / 56kw		

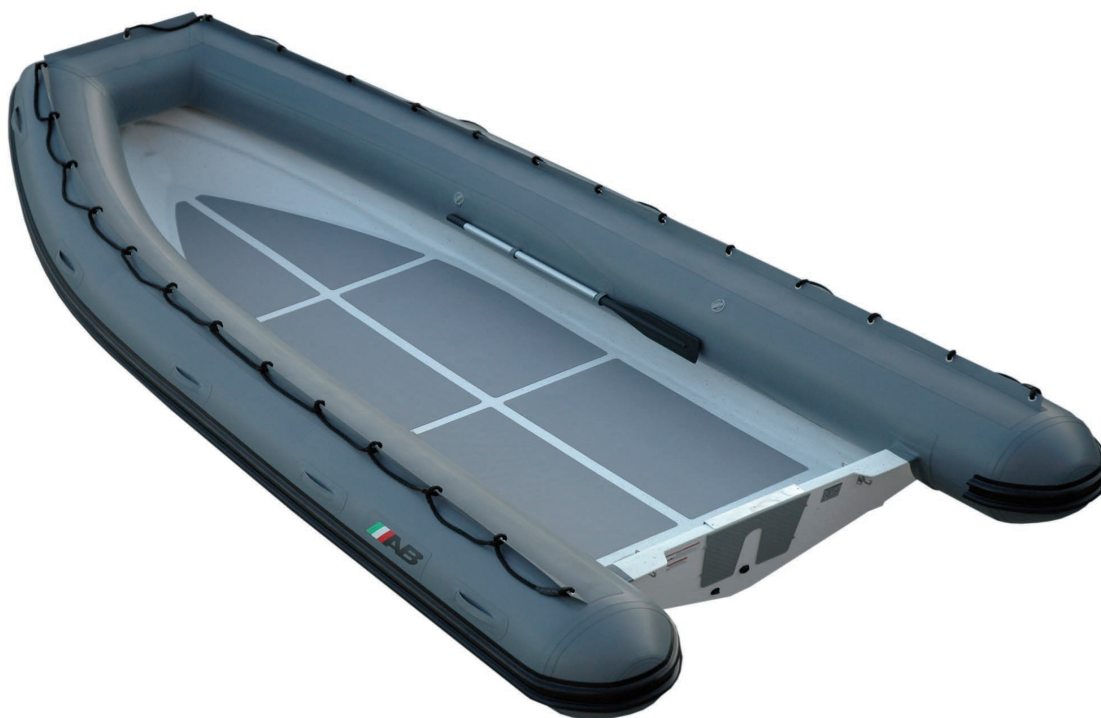
S T A N D A R D  
F E A T U R E S

- Professional Grade Hand Laid Fiberglass Deep "V" Hull
- Stringer System Laminated into Hull
- Bow Locker/ Seat
- Diamond Shape Non - Skid Deck
- Plastic External Transom Plate
- Aluminum Internal Transom Plate
- Heavy Duty 1670 Decitex Orca (CSM) Five Layer Coated Fabric
- Life Line Around Tube
- Non - Skid (CSM) Coated Fabric on Tube's Surface
- Pressure Relief Valves
- 4 Push Push Plastic Non-Corrosive 2 Stage Inflation Valves
- Double Solid Rub Rail
- Stainless Steel Bow Eye
- 4 Stainless Steel Davit Lifting Points
- Stainless Steel Towing Rings & Tie Downs
- Deck Condensation Plug
- Deck Drain with Plug
- 1 Front & 5 Side Orca (CSM) Fabric Handles on Tubes
- 3 Layer Reinforced Seams
- Paddle with Aluminum Shaft
- Paddle Holders
- Hand Pump
- Maintenance Kit
- Owner's Manual
- Additional Air Retaining Chamber Under the Floor
- Drain Scuppers

O P T I O N A L  
F E A T U R E S

- Bow Hatch Cushion
- Boat Cover
- Chock Set
- Bow Step with Fold Down Stainless Steel Cleat
- Lateral Fold Down Stainless Steel Cleat
- Removable Rowing Seat
- Bimini Top
- Fiberglass Console
- Fiberglass Console with Forward Seat
- Bench Seat with Storage
- Two person Jockey Seat
- Stainless Steel Helm Unit





S P E C S

Overall Length	: 17' / 5.18m	Number of Chambers	: 5	Shaft Length	: 20" / 50.8cm
Overall Beam	: 8'1" / 2.46m	Person Capacity	: 15	RDC Design Category	: C
Inside Length	: 13'1" / 4.0m	Weight	: 772lb / 350kg		
Inside Beam	: 4'4" / 1.33m	Recommended HP	: 75hp / 56kw		
Tube Diameter	: 20" / 0.50m	Maximum HP	: 90hp / 67kw		

S T A N D A R D  
F E A T U R E S

- Professional Grade Hand Laid Fiberglass Deep "V" Hull
- Stringer System Laminated into Hull
- Bow Locker/ Seat
- Diamond Shape Non - Skid Deck
- Plastic External Transom Plate
- Aluminum Internal Transom Plate
- Heavy Duty 1670 Decitex Orca (CSM) Five Layer Coated Fabric
- Life Line Around Tube
- Non - Skid (CSM) Coated Fabric on Tube's Surface
- Pressure Relief Valves
- 4 Push Push Plastic Non-Corrosive 2 Stage Inflation Valves
- Double Solid Rub Rail
- Stainless Steel Bow Eye
- 4 Stainless Steel Davit Lifting Points
- Stainless Steel Towing Rings & Tie Downs
- Deck Condensation Plug
- Deck Drain with Plug
- 1 Front & 5 Side Orca (CSM) Fabric Handles on Tubes
- 3 Layer Reinforced Seams
- Paddle with Aluminum Shaft
- Paddle Holders
- Hand Pump
- Maintenance Kit
- Owner's Manual
- Additional Air Retaining Chamber Under the Floor
- Drain Scuppers

O P T I O N A L  
F E A T U R E S

- Bow Hatch Cushion
- Boat Cover
- Chock Set
- Bow Step with Fold Down Stainless Steel Cleat
- Lateral Fold Down Stainless Steel Cleat
- Removable Rowing Seat
- Bimini Top
- Fiberglass Console
- Fiberglass Console with Forward Seat
- Bench Seat with Storage
- Two person Jockey Seat
- Stainless Steel Helm Unit





S P E C S	Overall Length : 19' / 5.79m	Number of Chambers : 5	Shaft Length : 25" / 63.5cm
	Overall Beam : 8'4" / 2.53m	Person Capacity : 15	Gas Built in Tank : 44 Gal / 167 L
	Inside Length : 15'2" / 4.62m	Weight : 1157lb / 526kg	RDC Design Category : C
	Inside Beam : 4'1" / 1.25m	Recommended HP : 115hp / 85.8kw	
	Tube Diameter : 22" / 0.56m	Maximum HP : 150hp / 111.9kw	

S T A N D A R D F E A T U R E S	<ul style="list-style-type: none"> <li>■ Professional Grade Hand Laid Fiberglass Deep "V" Hull</li> <li>■ Stringer System Laminated into Hull</li> <li>■ Diamond Shape Non-skid Deck</li> <li>■ Integrated Marine Grade Aluminum Fuel Tank</li> <li>■ Plastic External Transom Plate</li> <li>■ Aluminum Internal Transom Plate</li> <li>■ 2 Front &amp; 6 Side Orca (CSM) Fabric Handles on Tubes</li> <li>■ Life Line Around Tube</li> <li>■ Non - Skid (CSM) Coated Fabric on Tube's Surface</li> <li>■ Pressure Relief Valves</li> <li>■ Double Solid Rubrail</li> <li>■ Push Push Plastic Non-Corrosive 2 Stage Inflation Valves</li> <li>■ Heavy Duty 1670 Decitex Orca (CSM) Five Layer Coated Fabric</li> <li>■ Hand Pump</li> </ul>	<ul style="list-style-type: none"> <li>■ Maintenance Kit</li> <li>■ Owner's Manual</li> <li>■ Closed Cell Foam Upholstery</li> <li>■ Fiberglass Console with Forward Seat &amp; Cushion</li> <li>■ Leaning Bolster</li> <li>■ Bow Locker/Seat</li> <li>■ Console Front Access Lid</li> <li>■ Bow Step with Fold Down Stainless Steel Cleat &amp; LED Running Lights</li> <li>■ 360° LED White Light Navigation Pole</li> <li>■ Lateral Fold Down Stainless Steel Cleat</li> <li>■ 4 Stainless Steel Davit Lifting Points</li> <li>■ Stainless Steel Bow Eye</li> <li>■ Stainless Steel Tow Rings &amp; Tie Downs</li> <li>■ Stainless Steel Console Grab Rail</li> </ul>	<ul style="list-style-type: none"> <li>■ Plexiglass Windshield</li> <li>■ 8 Waterproof Rocker Switches with Circuit Breakers</li> <li>■ Battery Box</li> <li>■ Battery Switch</li> <li>■ Fuel and Water Separator Filter</li> <li>■ Sending Unit</li> <li>■ Automatic Bilge Pump 750 GPH</li> <li>■ Hydraulic Steering System</li> <li>■ Stainless Steel Steering Wheel with Knob</li> <li>■ Complete Tin Wiring &amp; Heat Shrink Sealed Terminals</li> <li>■ 4 Layer Reinforced Seams</li> <li>■ Battery Charger</li> <li>■ Stainless Steel Gas Springs</li> <li>■ 2 Deck Drain Scuppers &amp; Hull Drain with Plus</li> </ul>
------------------------------------	--	--	--

O P T I O N A L F E A T U R E S	<ul style="list-style-type: none"> <li>■ Stainless Steel Light Arch</li> <li>■ Aluminum T--Top</li> <li>■ Bimini Top with Stainless Steel Tubing</li> <li>■ Chock Set</li> <li>■ Boat Cover</li> <li>■ Console Cover</li> <li>■ Lifting Harness</li> <li>■ Teak Floor</li> </ul>	<ul style="list-style-type: none"> <li>■ CD/Radio System</li> <li>■ Compass</li> <li>■ GPS</li> <li>■ VHF Package</li> <li>■ Rod Holders</li> <li>■ Towing Post</li> <li>■ Engine Guard</li> </ul>
------------------------------------	--	--



Profile F

F 24

Professional Fiberglass Boats



S P E C S

Overall Length : 24' / 7.31m	Number of Chambers : 6	Shaft Length : 25" / 63.5cm
Overall Beam : 9'3" / 2.82m	Person Capacity : 20	Gas Built in Tank : 65Gal / 246 L
Inside Length : 19'3" / 5.87m	Weight : 1980lb / 900kg	RDC Design Category : B
Inside Beam : 5'4" / 1.64m	Recommended HP : 150hp / 111.9kw	
Tube Diameter : 24" / 0.61m	Maximum HP : 250hp / 186.5kw	

S T A N D A R D  
F E A T U R E S

- Professional Grade Hand Laid Fiberglass Deep "V" Hull
- Stringer System Laminated into Hull
- Non - Skid Rubber Floor Panels
- Integrated Marine Grade Aluminum Fuel Tank
- Plastic External Transom Plate
- Aluminum Internal Transom Plate
- 2 Front & 6 Side Orca (CSM) Fabric Handles on Tubes
- Life Line Around Tube
- Non - Skid (CSM) Coated Fabric on Tube's Surface
- Pressure Relief Valves
- Double Solid Rubrail
- Push Push Plastic Non-Corrosive 2 Stage Inflation Valves
- Heavy Duty 1670 Decitex Orca (CSM) Five Layer Coated Fabric
- Hand Pump
- Maintenance Kit
- Owner's Manual
- Closed Cell Foam Upholstery
- Fiberglass Console with Forward Seat & Cushion
- Leaning Bolster
- Bow Locker/Seat
- Console Front Access Lid
- Bow Step with Fold Down Stainless Steel Cleat & LED Running Lights
- 360° LED White Light Navigation Pole
- Lateral Fold Down Stainless Steel Cleat
- Stainless Steel Bow Eye
- Stainless Steel Tow Rings & Tie Downs
- Stainless Steel Console Grab Rail
- Plexiglass Windshield
- 8 Waterproof Rocker Switches with Circuit Brakers
- Battery Box
- Battery Switch
- Fuel and Water Separator Filter
- Sending Unit
- Automatic Bilge Pump 750 GPH
- Hydraulic Steering System
- Stainless Steel Steering Wheel with Knob
- Complete Tin Wiring & Heat Shrink Sealed Terminals
- 4 Layer Reinforced Seams
- Battery Charger
- Stainless Steel Gas Springs
- 2 Deck Drain Scuppers & Hull Drain with Plus

O P T I O N A L  
F E A T U R E S

- Stainless Steel Light Arch
- Aluminum T--Top
- Bimini Top with Stainless Steel Tubing
- Chock Set
- Boat Cover
- Console Cover
- Lifting Harness
- Teak Floor
- CD/Radio System
- Compass
- GPS
- VHF Package
- Rod Holders
- Towing Post
- Aluminum Engin Bracket





S P E C S

Overall Length	: 27' / 8.23m	Number of Chambers	: 6	Shaft Length	: 30" / 76.2cm
Overall Beam	: 10'1" / 3.07m	Person Capacity	: 25	Gas Built in Tank	: 189 Gal / 715 L
Inside Length	: 22'11" / 6.99m	Weight	: 2853lb / 1297kg	RDC Design Category	: B
Inside Beam	: 6'4" / 1.93m	Recommended HP	: 250hp / 186.5kw		
Tube Diameter	: 24" / 0.61m	Maximum HP	: 450hp / 335.7kw		

S T A N D A R D  
F E A T U R E S

- Professional Grade Hand Laid Fiberglass Deep "V" Hull
- Stringer System Laminated into Hull
- Diamond Shape Non-skid Deck
- Integrated Marine Grade Aluminum Fuel Tank
- Plastic External Transom Plate
- Aluminum Internal Transom Plate
- 2 Front & 8 Side Orca (CSM) Fabric Handles on Tubes
- Life Line Around Tube
- Non - Skid (CSM) Coated Fabric on Tube's Surface
- Pressure Relief Valves
- Double Solid Rubrail
- Push Push Plastic Non-Corrosive 2 Stage Inflation Valves
- Heavy Duty 1670 Decitex Orca (CSM) Five Layer Coated Fabric
- Hand Pump
- Maintenance Kit
- Owner's Manual
- Closed Cell Foam Upholstery
- Fiberglass Console with Forward Seat & Cushion
- Leaning Bolster
- Bow Locker/Seat
- Console Front Access Lid
- Bow Step with Fold Down Stainless Steel Cleat & LED Running Lights
- 360° LED White Light Navigation Pole
- Lateral Fold Down Stainless Steel Cleat
- Stainless Steel Bow Eye
- Stainless Steel Tow Rings & Tie Downs
- Stainless Steel Console Grab Rail
- Plexiglass Windshield
- 8 Waterproof Rocker Switches with Circuit Brakers
- Battery Box
- Battery Switch
- Fuel and Water Separator Filter
- Sending Unit
- Automatic Bilge Pump 750 GPH
- Hydraulic Steering System
- Stainless Steel Steering Wheel with Knob
- Complete Tin Wiring & Heat Shrink Sealed Terminals
- 4 Layer Reinforced Seams
- Battery Charger
- Stainless Steel Gas Springs
- 2 Deck Drain Scuppers & Hull Drain with Plus

O P T I O N A L  
F E A T U R E S

- Stainless Steel Light Arch
- Aluminum T-Top
- Bimini Top with Stainless Steel Tubing
- Chock Set
- Boat Cover
- Console Cover
- Lifting Harness
- Teak Floor
- CD/Radio System
- Compass
- GPS
- VHF Package
- Rod Holders
- Towing Post
- Aluminum Engine Bracket

