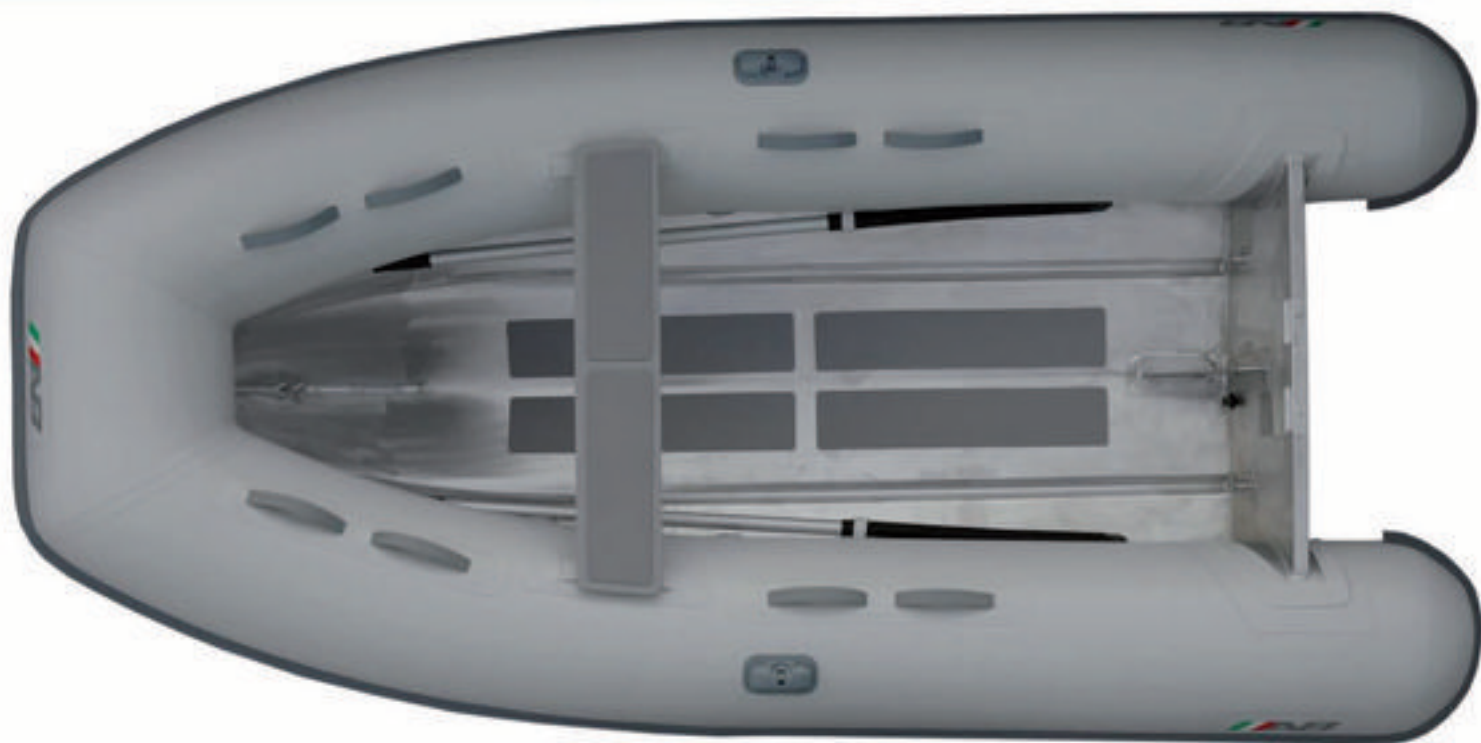




A B I N F L A T A B L E S

Iamina | 10UL | Ultra Light Aluminum Tenders



S P E C S	Overall Length	: 10' / 3.05m	Number of Chambers	: 3	Shaft Length	: 15" / 38.1cm
	Overall Beam	: 5'6" / 1.68m	Person Capacity	: 5	RDC Design Category	: C
	Inside Length	: 7'2" / 2.18m	Weight	: 95lb / 43kg		
	Inside Beam	: 2'8" / 0.81m	Recommended HP	: 8hp / 6.0kw		
	Tube Diameter	: 17" / 0.43m	Maximum HP	: 9.9hp / 7.4kw		

S T A N D A R D F E A T U R E S	<ul style="list-style-type: none"> Shallow "V" Marine Grade Aluminum Hull Transom Knee Non-Skid Rubber Floor Panels Plastic External Transom Plate Aluminum Internal Transom Plate With Security Lip Aluminum Bow Eye 3 Aluminum Davit Lifting Points Aluminum Bow Towing Rings Deck Drain with Plug 	<ul style="list-style-type: none"> Orca (CSM) Five Layer Coated Fabric Raised Single Rub Rail Push Push Plastic Non-Corrosive 2 Stage Inflation Valves 1 Front Orca (CSM) Fabric Handles on Tubes 2 Inside Bow Sets of Double Orca (CSM) Fabric Handles on Tubes 2 Inside Stern Double Orca (CSM) Fabric Handles on Tubes Removable Rowing Seat Oarlock Bases 	<ul style="list-style-type: none"> Telescopic Oars with Aluminum Shaft Paddle Holders Hand Pump Maintenance Kit Owner's Manual 3 Layer Reinforced Seams
------------------------------------	---	---	---

O P T I O N A L F E A T U R E S	<ul style="list-style-type: none"> Tube Chaps Boat Cover Chock Set
------------------------------------	---

